



安普盛(厦门) 能源科技有限公司
XIAMEN EMPERY SOLAR TECHNOLOGY CO.,LTD

安普盛(厦门)能源科技有限公司

XIAMEN EMPERY SOLAR TECHNOLOGY CO.,LTD

Address: Room 611 No. 368, Quanyutong Business Center, Xianhou She, Huli
Districts, Xiamen, China.

Tel: 86-592-5903050 Fax: 86-592-5903057

Mob: 86-13950145677 Skype: emperysolar001

Email: solar@emperysolar.com Web: www.emperysolar.com

 <https://www.facebook.com/solarmountingbracket>

 www.emperysolar.com

 [emperysolar9724](https://www.youtube.com/channel/UC...)



Website



WeChat



SOLAR
PV MOUNTING SYSTEM
SOLAR PANEL BRACKETS

Company Profile

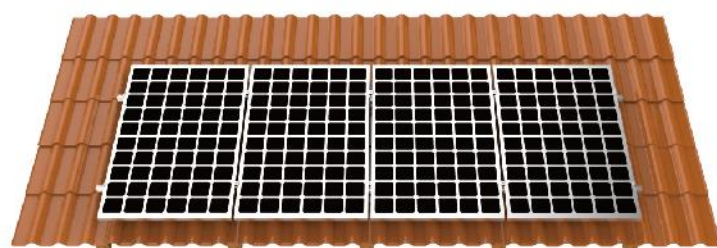
Xiamen Empery Solar Technology Co., Ltd is a professional provider of high-quality photovoltaic mounting systems in China. Empery Solar develops, manufactures, and markets a broad range of solar mounting systems in the marketplace. Therefore we can satisfy virtually all your needs in mounting solar panels, from small-scale solar applications in residential houses to heavy-task applications in industrial facilities. Empery's Principal products include Roof mount systems, Ground mount systems, Pole mount systems, Carport mount systems, Farmland mount systems, Fence, and Accessories.



CONTENTS

Tile Roof Mounting	1-3
Metal Roof Mounting	4-8
Metal Roof Hook (Mini Rail)	
Trapezoid Mounting System	
Irregular Tin Roof Mounting System	
Adjustable Tilt Mounting System	
Stand Off	9
Flashing Kit	10
Flat Roof Mounting	11-14
East to West Ballast Mount	
Triangle - Ballast Mount	
Triangle Mount System	
Steel - Ballast Mount	
Balcony Bracket	15-16
Ground Mounting	17-20
Aluminium Ground Mount	
Steel Ground Mount	
Steel single-pillar Mounting System	
Carport Mounting	21-22
Aluminium Carport	
Steel Carport	
Farmland Mounting	23-24
Aluminium Farmland Mount	
Steel Farmland Mount	
Floating Mounting	25-26
Accessory	27-33
Rails and Rail Connector	
Panel Clamp	
Grounding Clip and Cable Clip	
MC4 Connector and PV Cable	
Mini Rail & Hanger Bolt	
Ground Screw	34
Project Reference	35-36

Tile Roof Mounting



Empery solar's tile roof hook, gives you different option for installation on the rail (vertical or horizontal)

Features:

Enable fast, simple and cost-effective installation

Made of SUS304

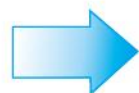
Highly corrosion resistant surface treatment

Fasteners and rail nut configure fully , to save installation time and purchasing extra parts

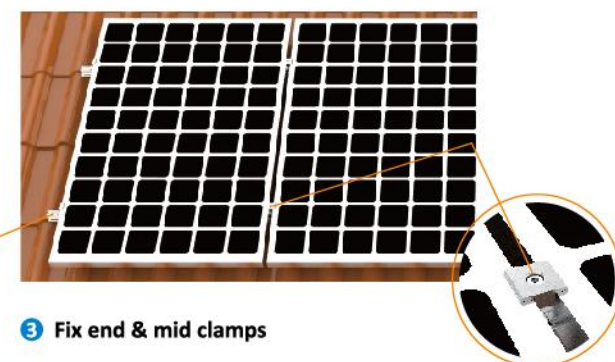
Installation Steps



1 Open tile and fix the roof hook to the purlin with self-tapping screws



2 Rail installation



3 Fix end & mid clamps

Tile Roof Mounting

Components

Material : AL/6005-T5&SUS304

Surface: clean anodized



1 Tile Roof Hook



2 Rail



3 Rail Connector



4 End Clamp



5 Mid Clamp



6 Grounding Clip



7 Grounding Lug

Tile Roof Hook

Material : SUS 304



1 EPR-TRH-01



2 EPR-TRH-02



3 EPR-TRH-03



4 EPR-TRH-04



5 EPR-TRH-05



6 EPR-TRH-06



7 EPR-TRH-07



8 EPR-TRH-10

Tile Roof Mounting

Adjustable Tile Roof Hook

Material : SUS304



1 EPR-TRH11



2 EPR-TRH12



3 EPR-TRH15



4 EPR-TRH23

Aluminium Tile Roof Hooks

Material : AL/6005-T5



1 EPR-TRH27



2 EPR-TRH28



3 EPR-TRH29



4 EPR-TRH30

Customized Services : OEM&ODM, Both Are Welcome

Metal Roof Mounting

Metal Roof Hook (Mini Rail)

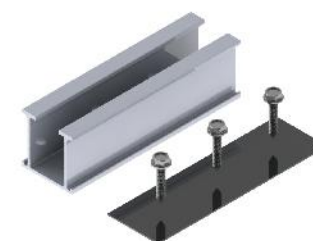


Profile:

Metal roof mounting system is installation on the metal roof .

Features

Mini rail (metal roof hook), instead the rail AL/6005-T5, high class anodized aluminium Fasteners and rail nut configure fully , to save installation time and purchasing extra parts , fast installation



1 Metal Roof Hook / Mini Rail



2 End Clamp



3 Mid Clamp

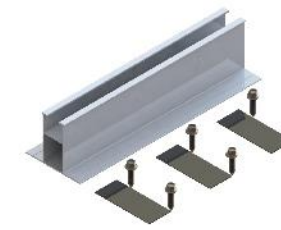
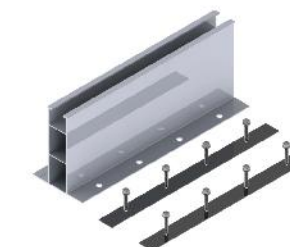


4 Grounding Clip



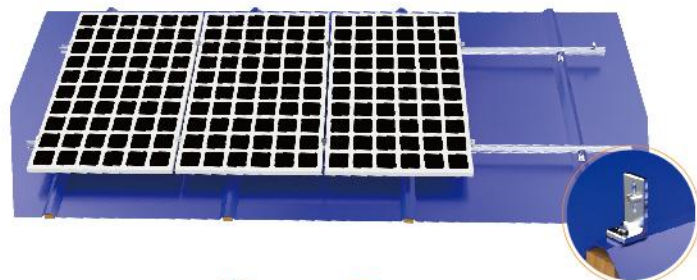
5 Grounding Lug

Other Style

EPR-MRH03-2
Height : 50mmEPR-MRH12
Height : 60mmEPR-MRH37
Height : 100mm

Metal Roof Mounting

Trapezoid Mounting System



Profile:

Trapezoid mounting system is suitable for whole kinds of metal roof. It can be sold and installed directly as a wholesale.

Features

L feet, have 3 heights(80mm/85mm/120mm)

AL/6005-T5, high class anodized aluminium

Fast installation

Fasteners and rail nut configure fully , to save installation time and purchasing extra parts

Customized services : OEM & ODM, both are welcome



1 L Feet



2 Rail



3 Rail Connector



4 End Clamp



5 Mid Clamp

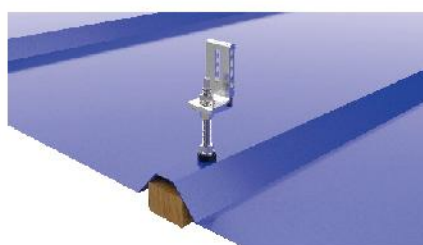


6 Grounding Clip



7 Grounding Lug

Detail Display



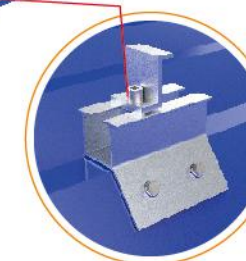
L Feet+Hanger Bolt
Material: SUS304+AL/6005-T5



L Feet+Screw
Material:AL/6005-T5

Metal Roof Mounting

Irregular Tin Roof Mounting System



Features:

Metal roof hook

AL/6005-T5, high class anodized aluminium

Fast installation

Fasteners and rail nut configure fully , to save installation time and purchasing extra parts

Customized services : OEM & ODM, both are welcome



1 Metal Roof Hook



2 Rail



3 Rail Connector



4 End Clamp



5 Mid Clamp



6 Grounding Clip



7 Grounding Lug

Metal Roof Mounting

Trapezoid Mounting System

Available Specifications

Material : AL/6005-T5



1 EPR-MRH-02



2 EPR-MRH-04



3 EPR-MRH-05



4 EPR-MRH-09



5 EPR-MRH-10-1



6 EPR-MRH-10-2(TC700)



7 EPR-MRH-11



8 EPR-MRH-13



9 EPR-MRH-15



10 EPR-MRH16(TC406)



11 EPR-MRH-18



12 EPR-MRH-19



13 EPR-MRH-20



14 EPR-MRH-29



15 EPR-MRH-34



16 EPR-MRH-35

Material : SUS 304



1 EPR-MRH-07



2 EPR-MRH-08



3 EPR-MRH-40



4 EPR-MRH-41

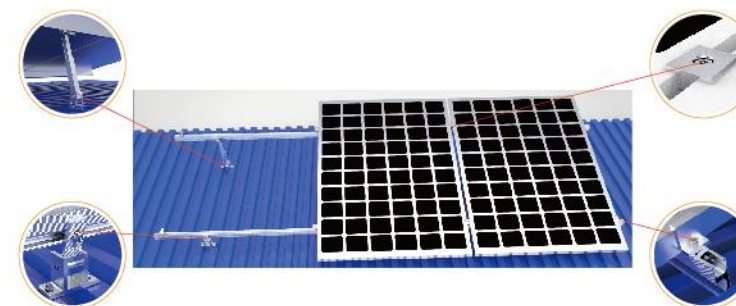
Metal Roof Mounting

Adjustable Tilt Mounting System

Adjustable tilt mounting is to allow the system to be tilted from 10-15, 15-30 or 30-60 degree

Features:

Enable fast, simple and cost-effective installation
AL/6005-T5. High class anodized aluminium
Waterproof EPDM rubber integrated
Fasteners and rail nut configured fully to saving installation time and purchasing extra parts



1 Adjustable Rear Leg 10°-15°



2 Adjustable Rear Leg 15°-30°



3 Adjustable Rear Leg 30°-60°



4 Adjustable Front leg



5 Rail Connector



6 Rail

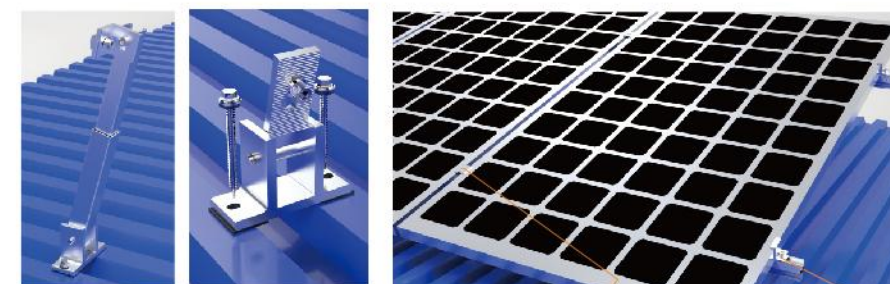


7 Mid Clamp 01



8 End Clamp 01

Installation Steps



1 Front & Rear Leg Installation

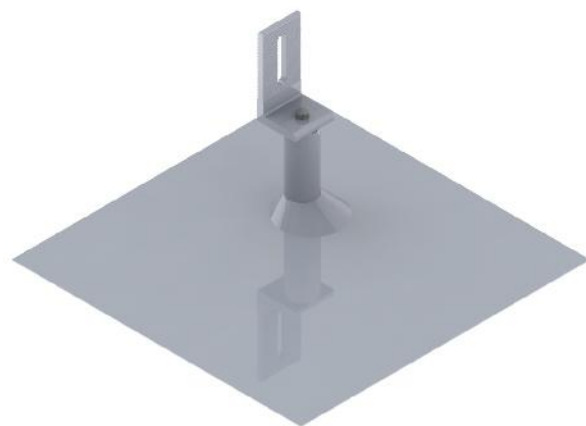


2 Rail Installation



3 Fix Mid & End Clamps

Stand Off



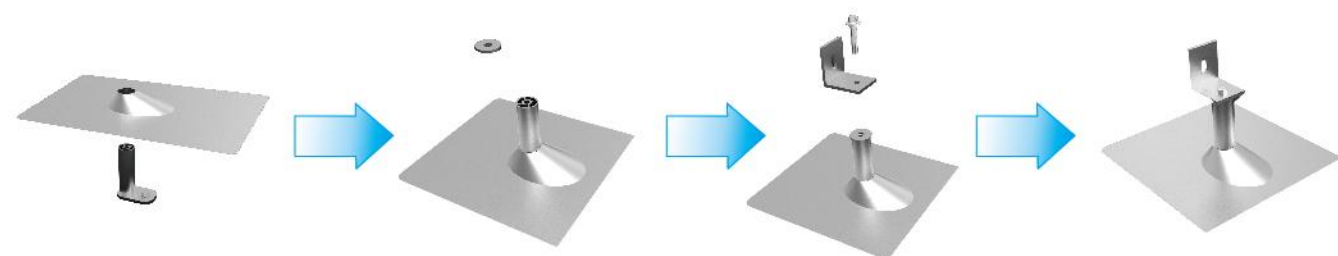
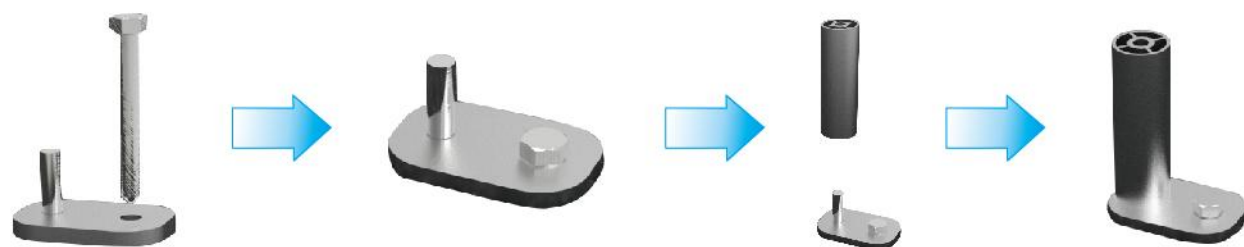
The aluminium standoff can be used on any type of flat roof

Features:

Enable fast, simple and cost-effective installation
AL/6005-T5. High class anodized aluminium
Waterproof EPDM rubber integrated
Fasteners and rail nut configured fully to saving installation time and purchasing extra parts



Installation Step



Flashing Kit



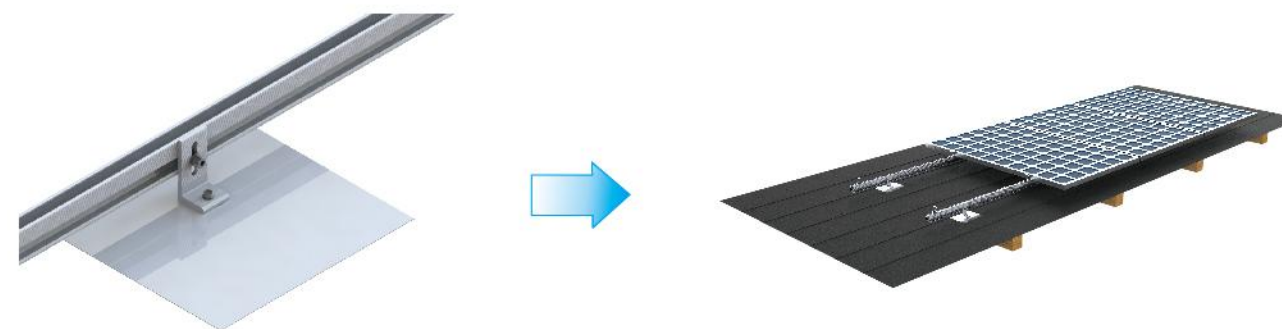
Flashing kit match L feet, offer the best solution for flat roof

Features:

Flasing and L feet made of 100% aluminium
Waterproof EPDM rubber integrated
Enable fast, simple and cost-effective installation
Fasteners and rail nut configured fully to saving installation time and purchasing extra parts



Installation Step



Flat Roof Mounting

East To West Ballast Mount



Profile:

East to west mount is a highly pre-installed pv support system suitable for industrial, commercial and civil concrete flat rooftop. It is made of all Aluminium alloy, economical and practical, and has reliable anti-corrosion performance. There are four installation methods: chemical bolt fixation, ballast fixation, concrete foundation and ground grid fixation to provide corresponding solutions



1 Metal Roof Hook



2 Adjustable Front Leg



3 Adjustable Back Leg 01



4 Adjustable Back Leg 02



5 Bolt Kits



6 Rail Clamp



7 End Clamp



8 Mid Clamp



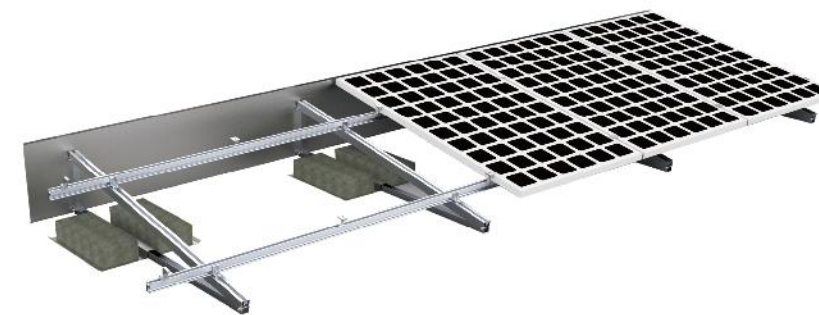
9 Ballast Plate

Detail Display



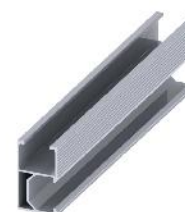
Flat Roof Mounting

Triangle -Ballast Mount



Profile:

Triangle-ballast systems is an universal mounting system to serve virtually any commercial flat roofs. The system is designed to provide the durability and flexibility solutions that is quick to install and is light on the roof.



1 Rail



2 Rail Connector



3 Rail Clamp



4 End Clamp



5 Mid Clamp



6 Board



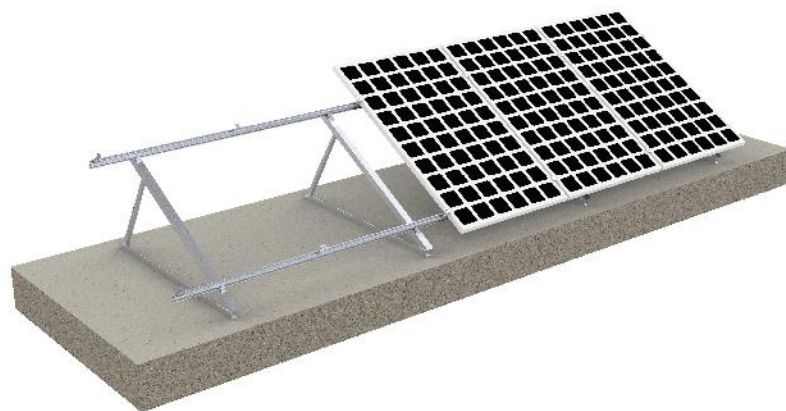
7 Pre-assembled Triangle Structure

Detail Display



Flat Roof Mounting

Triangle Mount System



Profile:

Triangle mounting systems is fixed with expansion bolts. The height and angle can be fixed, or it can be designed as adjustable angle 10°-15°, 15°-30°, 30°-60°. It can be sold and installed directly as a wholesale.



1 Triangle Bracket(can do adjustable)



2 Rail



3 Rail Connector



4 End Clamp



5 Mid Clamp



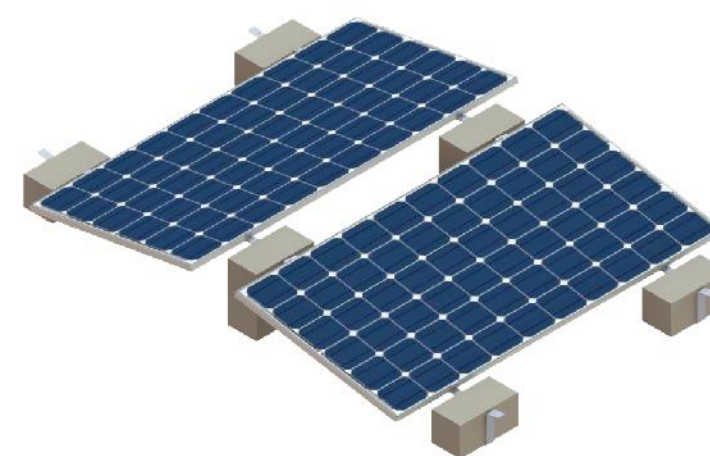
6 Rail Clamp

Detail Display



Flat Roof Mounting

Steel -Ballast Mount



Profile:

The raw material is steel. The cheapest flat roof installation system is convenient to install, and is suitable for areas with low wind speed and low snow load.



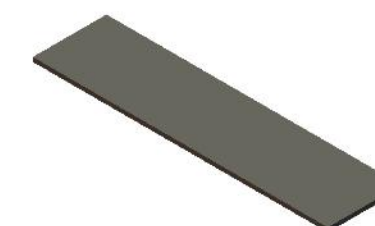
1 Front Support



2 Intermediate Support



3 End Clamp



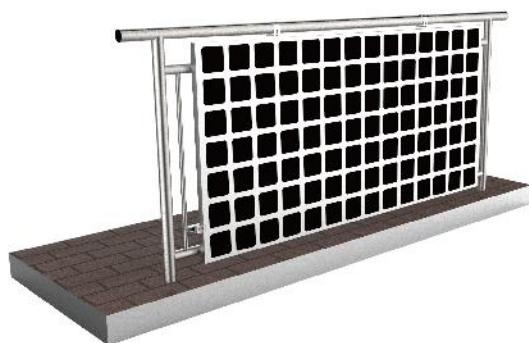
4 EVA

Detail Display



Balcony Bracket

Balcony Bracket (Type 1: Fixed)



Profile:

The balcony solar panel can be installed on balcony. The installation makes full use of the limited areas of high buildings and a harmonious integration of solar panel and building is thus achieved.



1 Hook



2 Fixed Link



3 Fixed Platen



4 End Clamp

Balcony Bracket (Type 2: Adjustable 25°-45°)



Technical Data:

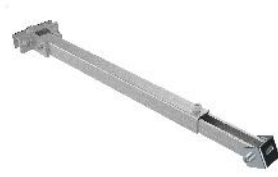
- tilt angle :25°-45°
- installation site : balcony
- max wind speed : up to 60m/s
- snow load : up to 1.4kn/m²
- material :AL/6005-T5+SUS304



1 Hook



2 U shape Base



3 Adjustable Leg



4 Fixed Plate

Balcony Bracket

Balcony Bracket (Type 3: Adjustable 25°-45°)



Profile:

Compared with other balcony brackets, better strength Which can be installed at flat ground or roof, railings, balcony and garden. It's much flexible with adjustable tilt range between 25°~45° to get more energy.



1 Pre-Bracket



2 End Clamp



3 Railing Fastener

Balcony Bracket (Type 4: Adjustable 25°-45°)



Technical Data:

- tilt angle :25°-45°
- installation site : balcony
- max wind speed : up to 60m/s
- snow load : up to 1.4kn/m²
- material :AL/6005-T5+SUS304



1 Hook



2 U shape Base



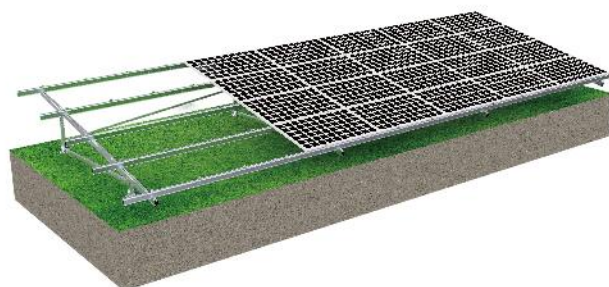
3 Adjustable Leg



4 Fixed Plate

Ground Mounting

AL Ground Mount



Profile:

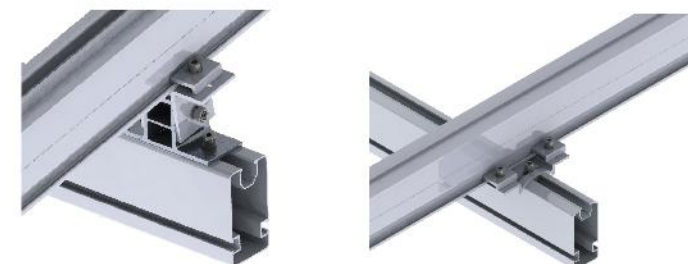
AL ground system is made of 100% aluminium for mounting on concrete strip foundations or ground screw.

The beam kit is pre-assembled, and the components are well designed to fulfill installation time and cost saving.



Ground Mounting

Variation Of Rail Clamp



Adjustable Rail Clamp Details:

- Adjustable Range : $\pm 20^\circ$; $\pm 45^\circ$
- Material : AL/6005-T5



Different Type Of Beam



1 EPR-B06 50*90



2 EPR-B01 55*100
EPR-B02 50*100
EPR-B03 60*97



3 EPR-GA02-SP1
50*50
EPR-GA02-SP1
60*60

Different Type Of Rail



1 EPR-R14
56*88
EPR-R08
70*105



2 EPR-R15
56*100
EPR-R06
52*105



3 EPR-R13 56*100

Different Type Of Enforce Kit



1 EPR-EK01
20*40



2 EPR-EK02
40*40*T3
EPR-EK03
40*40*T4

Components For Beam Kit



1 Beam



2 H Connector①



3 H Connector②



4 Base①



5 Base②



6 Pillar

Beam Kit Type



N Type



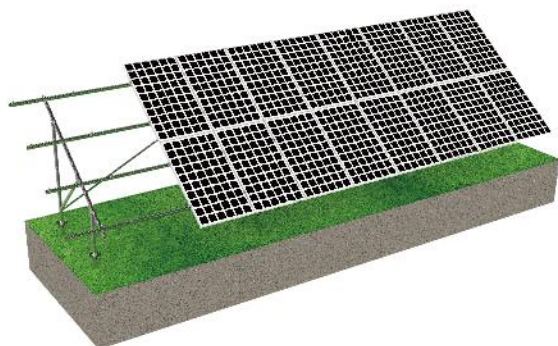
W Type



Multi-Row

Ground Mounting

Steel Ground Mount



Profile:

Steel ground mounting system can be ground screw or concrete foundation, without geographical constraints, applicable materials have high corrosion resistance.



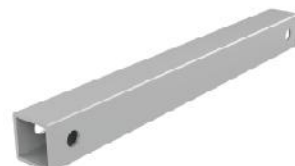
1 Leg Kit



2 U-Connector



3 C Steel Beam



4 Square Pipe



5 C Steel Rail



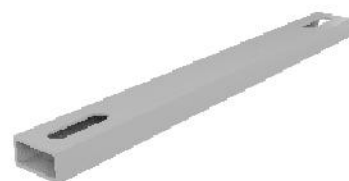
6 C Steel Rail Connector



7 End Clamp 01



8 Mid Clamp 01



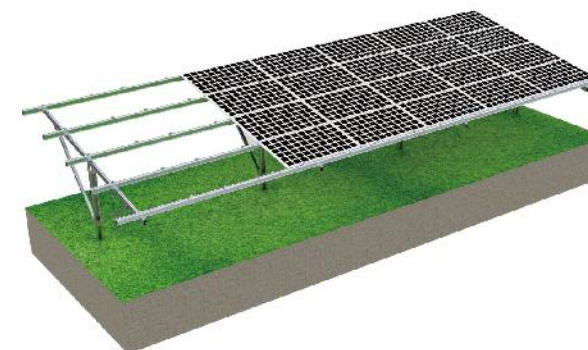
9 Inclined Support



10 Ground Screw

Ground Mounting

Steel Single-Pillar Mounting System



Profile:

Steel single-pillar mounting system is applied to large commercial solar plant and plant for public utilities. The biggest advantage is the ease of installation. The material of solar ground mounting structures is hot dip galvanized that it has a strong wind resistance.



1 Pole Leg



2 Rail Clamp



3 Beam Rail



4 Square Pipe



5 Rail



6 Rail Connector



7 End Clamp



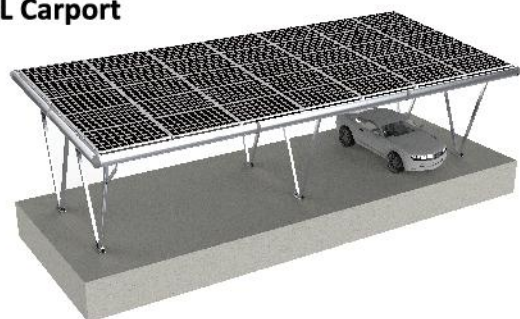
8 Mid Clamp



9 Adapter Assembly

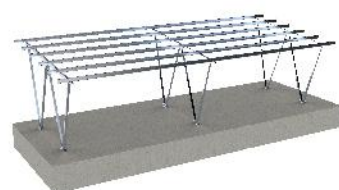
Carport Mounting

AL Carport



Profile:

AL carport, designated to protect your car from bad weather conditions. It is also engineered to hold most types of pv modules on the top of the carport.



Non-Waterproof



1 Beam Kit



2 Rail



3 Rail Connector



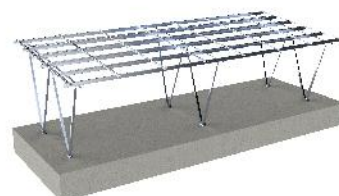
5 Rail Clamp



6 End Clamp



7 Mid Clamp



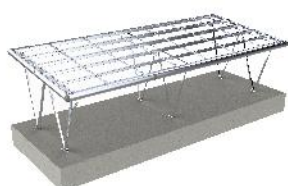
Simple Waterproof



1 Vertical Guide Gutter



2 Horizontal Guide Gutter



Completely Waterproof



1 Water Flume



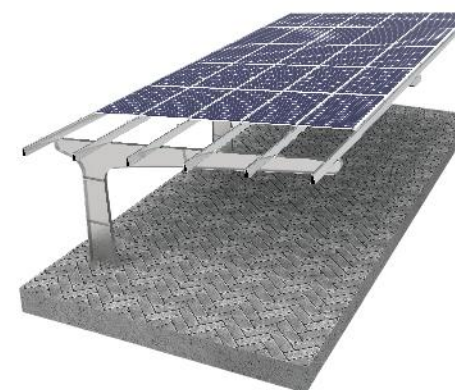
2 Water Pipe



3 Arc Baffle

Carport Mounting

Steel Carport

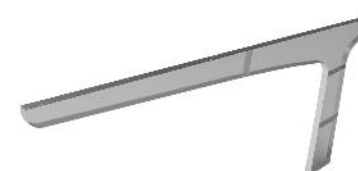


Profile:

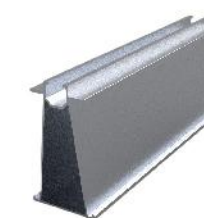
Carbon steel carport system which has the characteristics of heavy weight, strong stability, wider height and width. It is suitable for different climates in different countries. It can be designated reasonable height, width and rain-proof characteristics according to customer's needs and actual conditions.



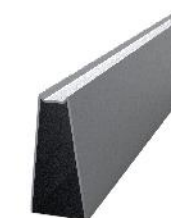
Detail Display



1 Pillar



2 Rail



3 Rail Connector



4 Rail Clamp



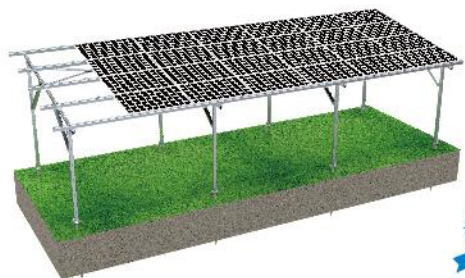
5 End Clamp



6 Mid Clamp

Farmland Mounting

AL Farmland Mount



Profile:

Farmland mounting system is applicable to the pv array system on the farmland. Its material, including the hot-dip galvanized steel and anodized aluminium alloy, is all anti-corrosive. According to practical requirements, the system could be planned and customized on the factory to eliminate the welding and cut onsite to save time and money.



1 Beam Kit



2 Rail



3 Rail Connector



4 Pillar



5 Strengthen Bar



6 End Clamp

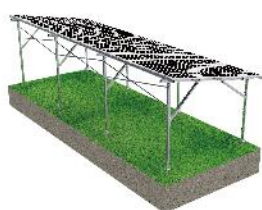


7 Mid Clamp

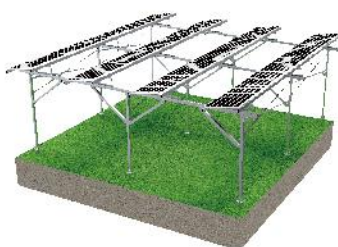


8 Base

Detail Display



Variation Of Bracket



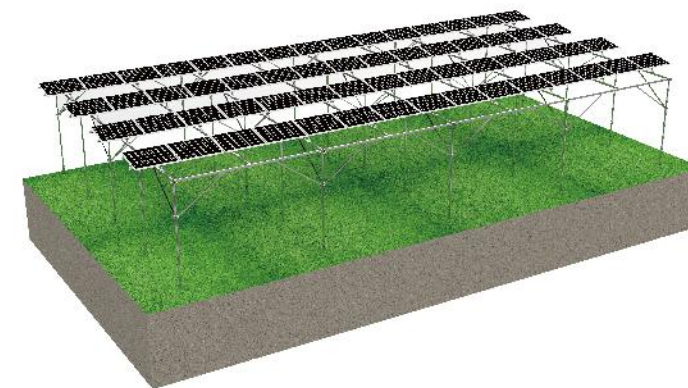
Product Details:

Farmland mounting system with triangle structure to ensure space for light shine on the plants beneath the bracket



Farmland Mounting

Steel Farmland Mount



Profile:

Design with hot-dip galvanized steel and anodized aluminium alloy, which are all anti-corrosive.

According to practical requirements, the system could be planned and customized on the factory to eliminate the welding and cut onsite to save time and money.



1 Leg



2 Beam



3 Rail



4 Rail Connector



5 All Around Sleeve



6 Leg Base

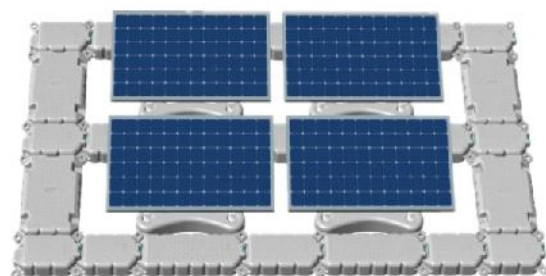


7 Rail Clamp

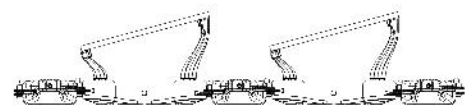


8 Angle Steel

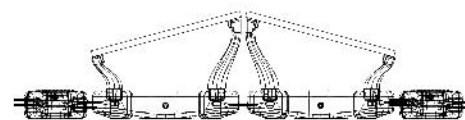
Floating Mounting



Structure



Double Row In Same Facing



Symmetrical Facing

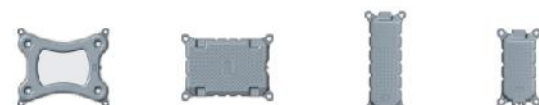
Technical Parameter

Product Name	EmperySolar Floating PV Mounting System F1	Design Standard	AS/NZS 1170, DIN 1055, IIS C8955: 2017, International Building Code IBC 2009;
Install Site	Lake, Reservoir	Material	HDPE
Tilt Angle	10° or 15°	Fastener Material	Zinc-Nickel Alloy Electroplated Steel & DPDE
Wind Load	50m/s	Accessories Material	AL6005-T5 (Anodized)
Snow Load	1KN/m ²	Color	Gray or Customized
Water Surface Clearance	330-350mm	Bearing Weight	Main Floater 70KGS/m ² , Aisle 155 KGS/m ²
Module Type	Frame or Double Glass	Certificates	TUV, SGS, UL, ISO 9001
Panel Orientation	Landscape, Double Row In Same Facing, Symmetrical Facing	Hot Sales Zone	CN, AU, JP, ASEAN, EU, USA

Support system has a number of technical certification



Floater & Aisle



Main Floater Outer Aisle Long Aisle Short Aisle

Name	Dimension	Function	Buoyancy	Materials	Temperature resistance test	Pressure test	Drinking water standard
Main Floater	1210*1020*185mm	Supporting PV modules	980N	HDPE Blow Molding	-30~85°C	150kg/m ²	GB/T 5750-2006 Standard Test methods for drinking water metal indicators, GB 4806.7-2016 National food safety standard plastic materials and products for food contact
Outer Aisle	700*1020*185mm	Supporting equipment	840N				
Long Aisle	1210*425*185mm	Connecting & Maintenance	700N				
Short Aisle	700*425*185mm		420N				

Fixing Parts

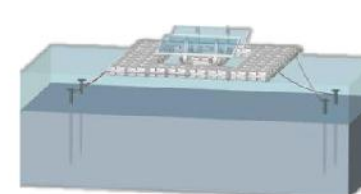


Main Floater Racks (Aluminium Alloy) Bolt & Nut Insert

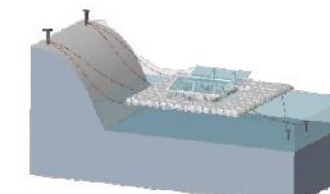
Name	Function	Materials
Racks (Plastic)	Fixed the module	HDPE/Blow Molding
Racks (Aluminium alloy)	Fixed the module	Aluminium Alloy/Welding
Bolt & Nut	Connecting & Fixing the Aisle	PP+UV Stabilizer/Injection Molding
Insert	Fastening the Aisle	PP+UV Stabilizer/Injection Molding

Floating Mounting

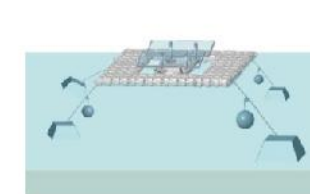
Anchoring system is an important part of floating solar power station. EmperySolar will provide solutions such as stake anchor, shore anchor and sunken anchor. The anchor products can be purchased together with EmperySolar floaters.



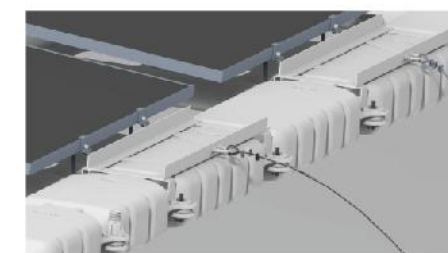
1 Stake Anchor



2 Shore Anchor



3 Sunken Anchor



Project Reference

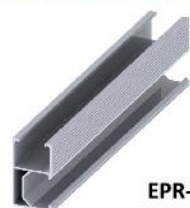




Rails and Rail Connector

Silver

Rail: length can be customized



EPR-R19 Size:26*44mm



EPR-R17 Size:26.2*51mm



EPR-R20 Size:26.2*55mm



EPR-R16 Size:31.4*42mm



EPR-R5 Size:30.75*67mm



EPR-R23 Size:40*40mm



R19&R17&R20 Rail Connector



R16 Rail Connector



R5 Rail Connector



R23 Rail Connector



End Cover for R19



End Cover for R17



End Cover for R20



End Cover for R16



End Cover for R5



End Cover for R23



Rails and Rail Connector

Black

Rail: length can be customized



EPR-R19 Size:26*44mm



EPR-R17 Size:26.2*51mm



EPR-R20 Size:26.2*55mm



EPR-R16 Size:31.4*42mm



EPR-R5 Size:30.75*67mm



EPR-R23 Size:40*40mm



R19&R17&R20 Rail Connector



R16 Rail Connector



R5 Rail Connector



R23 Rail Connector



End Cover for R19



End Cover for R17



End Cover for R20



End Cover for R16



End Cover for R5
















End Cover for R23

Panel Clamps

Silver


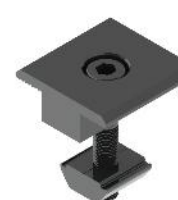

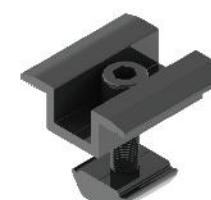






	EPR-EC01 30mm 32mm 35mm 40mm 45mm 50mm		EPR-MC01 30mm 32mm 35mm 40mm 45mm 50mm
	EPR-EC02 30mm 32mm 35mm 40mm 45mm 50mm		EPR-MC02 30mm 32mm 35mm 40mm 45mm 50mm
	EPR-MC03(H29) 30mm 32mm 35mm 40mm 45mm 50mm		EPR-MC05(H15) 30mm 32mm 35mm 40mm 45mm 50mm
	EPR-AEC Adjustable End Clamp (35mm~55mm)		EPR-AMC Adjustable Mid Clamp (35mm~55mm)
	EPR-FEC01 Film End Clamp 01 (First Solar Certified)		EPR-FMC Film Mid Clamp 01 (First Solar Certified)
	Rapid Installed End Clamp		Rapid Installed Mid Clamp
	EPR-RC03(H44)		EPR-RC04(H49)




Panel Clamps

Black



	EPR-EC01 30mm 32mm 35mm 40mm 45mm 50mm		EPR-MC01 30mm 32mm 35mm 40mm 45mm 50mm
	EPR-EC02 30mm 32mm 35mm 40mm 45mm 50mm		EPR-MC02(H18) 30mm 32mm 35mm 40mm 45mm 50mm
	EPR-MC03(H29) 30mm 32mm 35mm 40mm 45mm 50mm		EPR-MC05(H15) 30mm 32mm 35mm 40mm 45mm 50mm
	Rapid Installed End Clamp		Rapid Installed Mid Clamp

Special Clamp

			
End Clamp With Grounding Pins	Mid Clamp With Grounding Pins	Locating Plate End Clamp	Locating Plate Mid Clamp



Grounding Clip and Cable Clip



EPR-FLX-25



EPR-SLT-28



EPR-FLX-30H



EPR-CLP-31



EPR-DSK-34



EPR-SLT-40



EPR-CLP-41



EPR-DSK-44



EPR-CLP-50



EPR-CLP-61



EPR-GC01



EPR-CLP-LUG



EPR-CC01 4mm², 4Cables



EPR-CC02



EPR-CC03



EPR-CC04 4mm², 2Cables



EPR-CC05 6mm², 2Cables



EPR-SCC-ST/2
4mm², 2Cables



EPR-SCC-US/2
2Cables, For 4mm² or 6mm² Cables



EPR-SCC-4S/4
4mm², 4Cables



EPR-SCT-300
Stainless Steel Tie 4.6*300mm



MC4 Connector and PV Cable



EPR-MC4-01



EPR-MC4-03



EPR-MC4-04



EPR-MC4-05



EPR-MC4-06



EPR-MC4-07



EPR-MC4-10



EPR-S



PV Cable (Black)
4mm² and 6mm²



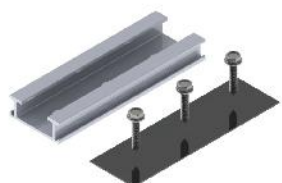
PV Cable (Red)
4mm² and 6mm²



PV Cable (Double Core)



Mini Rail



EPR-MRH03-1 (H15)



EPR-MRH03 (H35)



EPR-MRH03-2(H50)



EPR-MRH12(H60)



EPR-MRH37 (H100)

Hanger Bolt Type



Ground Screw

Material:hot-dip galvanized steel Q235B

Customization:customized length and other requirements you required

Ground Screw	Dia(mm)	Length(mm)	Thick(mm)	Flange(mm)
EPR-GS01	76/89	1200/1600/1800/2000/2500	3.0/3.5	200/220
EPR-GS02	76/89	1200/1600/1800/2000/2500	3.0/3.5	200/220
EPR-GS03	76/89	1200/1600/1800/2000/2500	3.0/3.5	200/220
EPR-GS04	76/89	1200/1600/1800/2000/2500	3.0/3.5	200/220
EPR-AGS01	76/89	1200/1600/1800/2000/2500	3.0/3.5	200/220



EPR-GS01



EPR-GS02



EPR-GS03



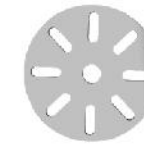
EPR-GS04



EPR-AGS01



Flange 1#



Flange 2#



Flange 3#



Flange 4#

Projects Reference



1 Total Layout: 2 MW
Installation site: Malaysia



2 Total Layout: 1.2 MW
Installation site: Saudi Arabia



3 Total Layout: 2 MW
Installation site: Japan



4 Total Layout: 150KW
Installation site: Thailand



5 Total Layout: 3 MW
Installation site: Japan



6 Total Layout: 500KW
Installation site: Chile



7 Total Layout: 700KW
Installation site: Armenia



8 Total Layout: 3.3MW
Installation site: Dubai



9 Total Layout: 20MW
Installation site: Thailand



10 Total Layout: 6MW
Installation site: Singapore



11 Total Layout: 5MW
Installation site: Sweden



12 Total Layout: 1MW
Installation site: The Philippines

Projects Reference



1 Total Layout: 800KW
Installation site: Denmark



2 Total Layout: 300KW
Installation site: Switzerland



3 Total Layout: 50KW
Installation site: Japan



4 Total Layout: 200KW
Installation site: South Africa



5 Total Layout: 100KW
Installation site: Japan



6 Total Layout: 750KW
Installation site: Japan



7 Total Layout: 500KW
Installation site: Japan



8 Total Layout: 100KW
Installation site: Malaysia



9 Total Layout: 1.2MW
Installation site: Lebanon



10 Total Layout: 2.4MW
Installation site: Japan



11 Total Layout: 1.5MW
Installation site: Japan



12 Total Layout: 1MW
Installation site: Japan